



OUR JOURNEY TO BECOMING

Stewards of Sustainability

2022-2023

Stewardship of the earth has been important to WP Rawl since 1925,

when founders Walter and Ernestine Rawl planted the first few seeds of cabbage on their wedding day, and opened their farm doors in Gilbert, SC. Our sustainability roots can be traced back all the way to the beginning.





**“Farmers were
the original
environmentalists.”**

ASHLEY RAWL

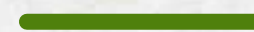
*VP of Sales, Marketing, Product Development,
and grandson of Walter Rawl*

Today, WP Rawl is continuing its sustainable legacy by achieving actionable sustainability goals, from our growing practices all the way through our distribution. We've always been sustainably-minded and focused, and have even bigger goals for the future. Four generations of WP Rawl have diligently integrated sustainable farming and business practices into every area possible.

CarbonCents Partnership



In 2023 we partnered with CarbonCents to evaluate every detail of our farm's operations to calculate our carbon footprint and develop new sustainability goals. Through CarbonCents CarbonBI data program, WP Rawl was able to set cost-effective reduction targets to aid in our ongoing process of sustainable change.



Our Sustainability Journey

1

AWARE

- Beginning to estimate carbon footprint
- Understanding baseline emissions

2

SHARING

- Sharing of baseline data internally
- Developing SMART goals
- Sector benchmarking

3

MANAGING

- Identify opportunities for reduction
- Implementing on SMART goals

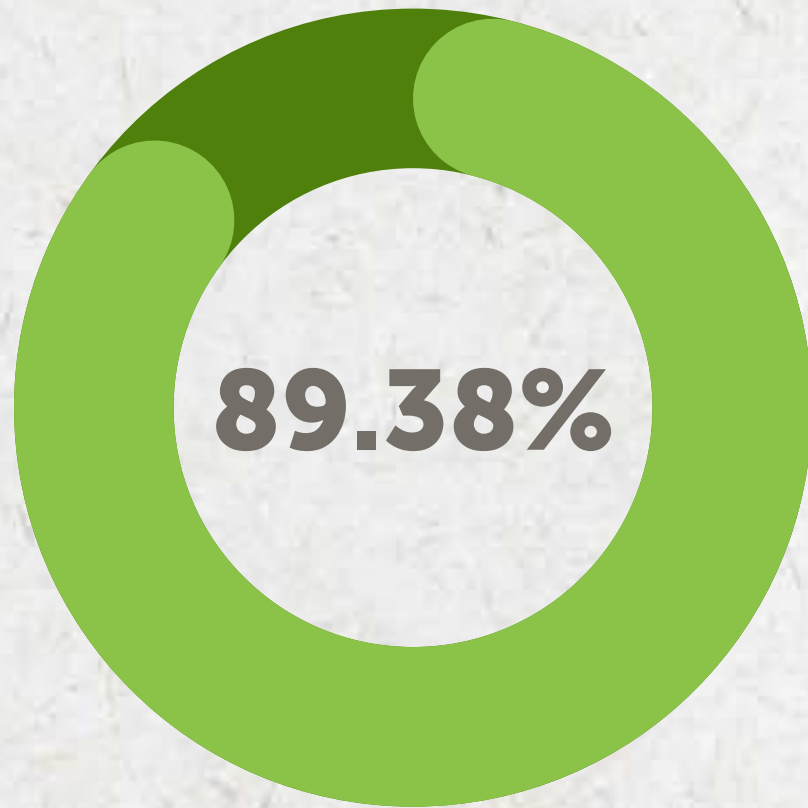
4

EVOLVING

- Aligned with corporate objectives
- Engaging suppliers & stakeholders

Initiative #1

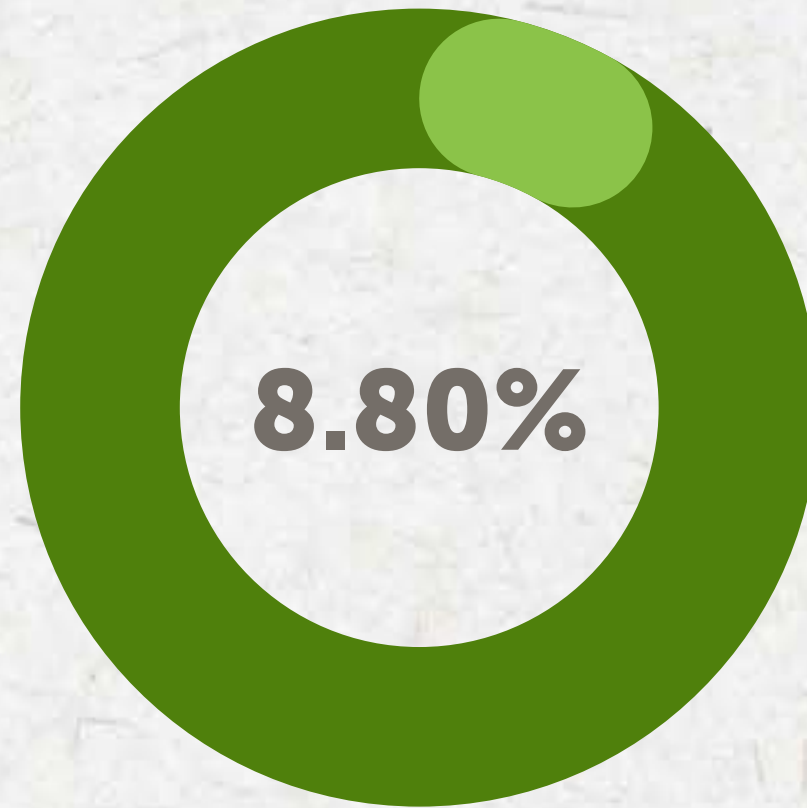
Carbon Footprint



SCOPE 1

Direct Emissions

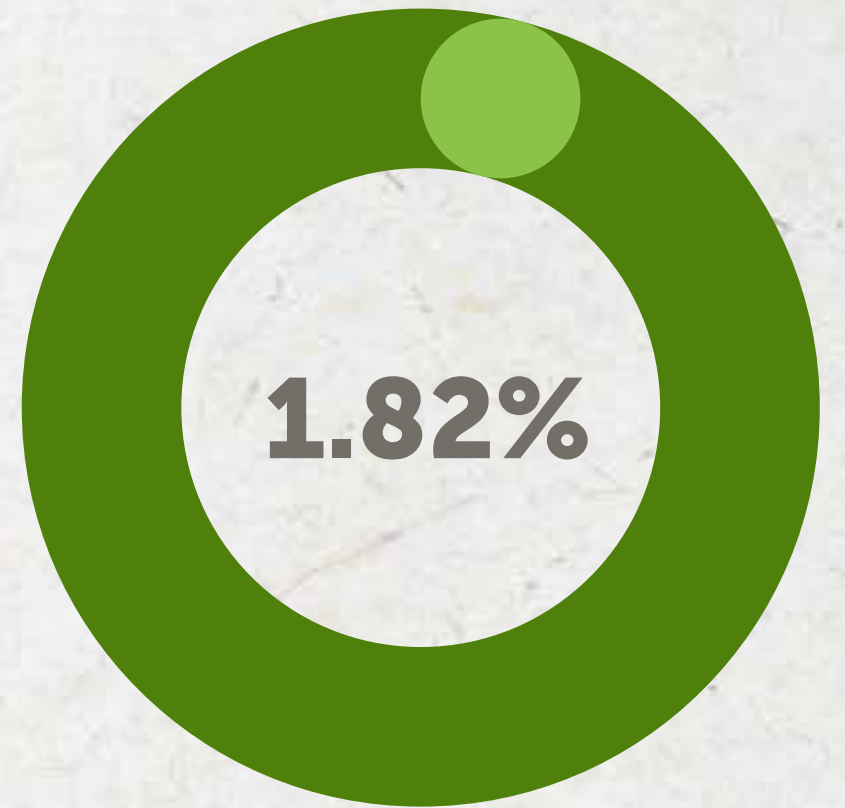
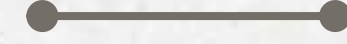
- Stationary fuels
- Refrigerants & chemical
- Fertilizer
- Transportation



SCOPE 2

Indirect Emissions

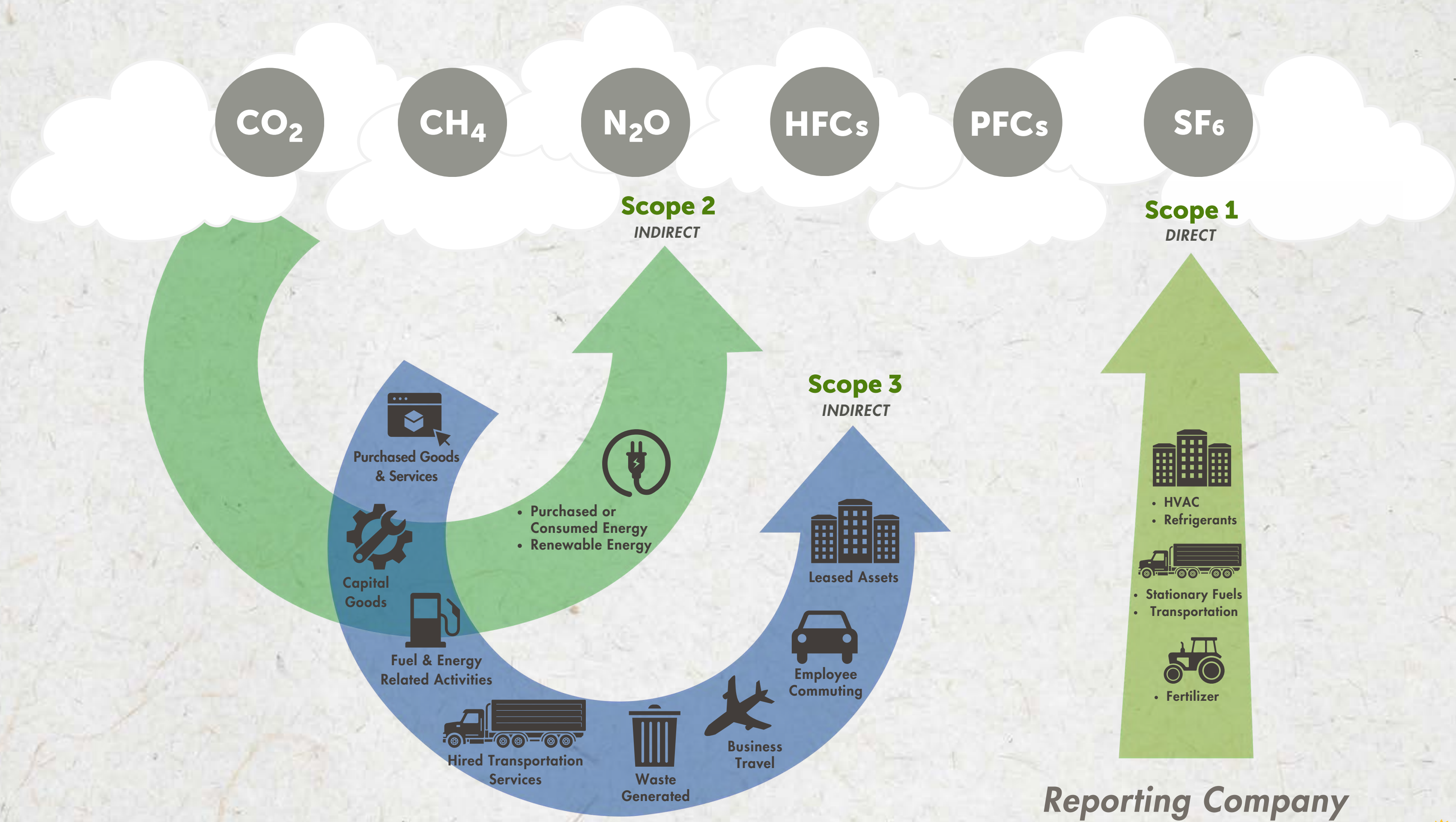
- Purchased or consumed energy
- Renewable energy



SCOPE 3

Supply Chain

- Food
- Paper
- Commuting
- Waste
- Company Travel
- Wastewater



Upstream Activities

Reporting Company

Initiative #2

Waste Avoidance



Recycled Cardboard

120.656 metric tons = 24.16 MTCDE avoided

Compost

400 tons of compost/year = resulting in 46.25 MTCDE avoided

Recycled Film

9.88 million bags

Continued Efforts

Research by-product to eliminate food waste



Initiative #3

Composting

Below are the stages of composting around the farm. All of our excess material, from water to product, is recycled through our organic fields.



WASTE WATER

The water that runs through our operations gets drained to an outside drum where it is shaken clean. From there it travels to our lagoon where it continues to be sifted. That water is then sprayed through a pivot over our rye field for compost.



RYE FIELD

While Rye is used as a cover crop throughout the year to keep the nutrients of the soil healthy and to protect surrounding crops, we also bail it into hay where it is then taken to our compost pile.



GREEN WASTE

Greens that did not make it down the line in our operations are brought here to the compost pile.



MIXING THE TWO

A layer of rye is covered with a layer of greens and mixed in the compost turner once a week.



BREAKING DOWN

Depending on the time of year in 8 to 12 weeks our compost is ready to spread!



APPLYING IT

This is our Nitro Spreader. It allows us to quickly and evenly spread nutrients to the soil over a large area. It's filled with fresh compost and tossed over our organic fields.

Initiative #4

Recyclable Film

With innovation + sustainability at the forefront of our business strategy and as the leader in the leafy greens industry, our goal was to become the first-to-market with recyclable friendly packaging.

After a few years of research and testing, we are proud to announce that our **leafy greens packaging** and **fresh bulk twist ties** are now **100% recyclable via store drop off!**

Recycled properly, our bags and twist ties are turned into composite building materials for things like park benches, patio decks and chairs.





Initiative #5

Beneficials

As a farm, it's not only important to take care of the land that produces, but also the ecosystem that surrounds it. Growing flowers amongst our crops is a natural pest control option. It creates a healthy home and increases biodiversity, all while boosting yields and keeping our crops healthy.

It's a form of biological control in that the activity of the beneficial insects reduces the movement of certain pest species on our products, reducing the use of herbicides and pesticides.

Updated Pivots



Over the past few years, we have upgraded our pivot technology and made it a goal to be 100% accurate with our water supply. The technology that new pivots offer help us to ensure that only the water we actually need to use is being sprayed.



The VFD uses radio signal controls to tell our operators what's going on with each water well. Most importantly, its pressure sensors monitor water and energy usage, prevent erosion, and help us save on labor and fuel.



Initiative #7

13

Night Harvesting

Not only does harvesting at night mean cooler temperatures for our team members during the summer months, but it also helps with the cooling process of our crops!

Night harvesting allows the product to cool much quicker than product that is harvested in 100 degree heat, while saving on energy and water usage in our operations.

Initiative #8

Going Paperless

With an overall goal to reduce paper waste in all departments, we have made major progress both in the field and on the road. WP Rawl has partnered with digital apps that allow us to communicate, update, and review work completion statuses. This has removed excess paper and increased job functionality.



Initiative #9

New Trucks

Our 2024 Freightliner Cascadias are an investment for the future. Built with cutting-edge truck technology, the Cascadia delivers superior fuel economy and is designed to work together for maximum performance and lower operational costs.

By equipping our drivers with the best, we have reduced our fuel rate usage significantly and increased the lifespan of our engines!

Initiative #10

Updated Compressors

We recently switched our refrigeration system from a freon based system to an ammonia based system. This switch requires fewer compressors, less maintenance repairs, savings on service costs, and lower energy consumption.



THANK YOU

Here at WP Rawl, we understand that sustainable agriculture requires the will to change. Our team is continually looking for new and innovative ways to better ourselves and the impact we make on present and future generations.





824 Fairview Road | Pelion, SC 29123


www.rawl.net |    



ASHLEY RAWL

*VP of Sales, Marketing, Product Development,
and grandson of Walter Rawl*

 ashley.rawl@rawl.net


 803-894-1961



CHRISTINE JACKSON

*Senior Manager, Marketing and Product
Development*

 christine.jackson@rawl.net

 803-785-3146